

Class: PHAEOPHYCEAE



Figure 13: *Padina minor* Yamada habit. The surface of the blade is divided into concentric zones by hair lines which are equidistant from each other. Based on description of Trono (1997)

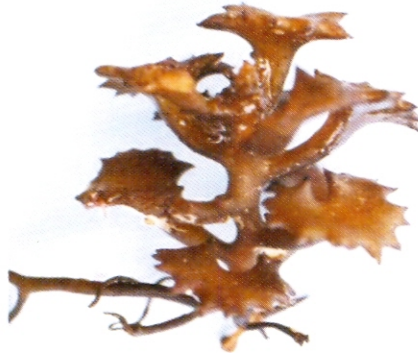


Figure 14: *Turbinaria ornata* (Turner) J. Agardh, habit. Distal end of the leaves expanded to form a somewhat circular and fleshy marginal blade, outlined by sharp and coarse teeth; the center of the blade concave and conspicuously surrounded, partially or fully, by a crown of teeth. Based on description of Ismail (1995)